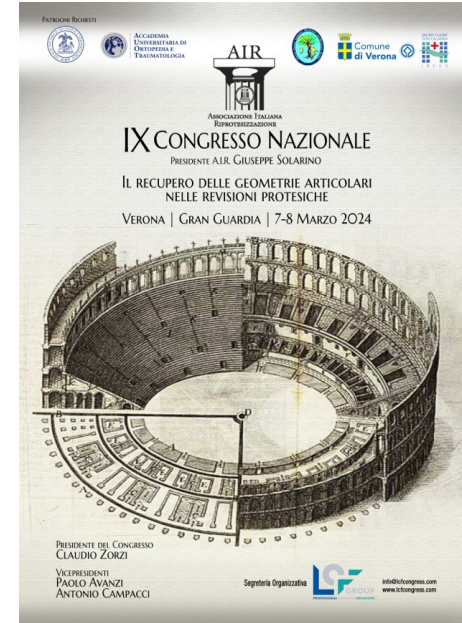


TRABECULAR TITANIUM RICOSTRUZIONE DELLA GLENA CON INNESTO OSSEO

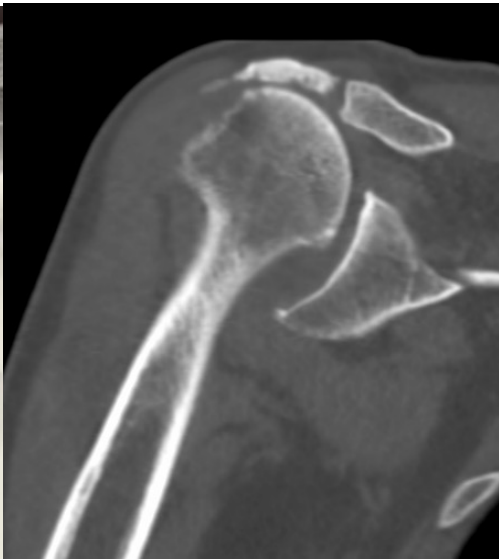
Dr. Stefano Di Fabio

Direttore UOC Ortopedia e Traumatologia

Ospedale Santa Maria del Prato di Feltre (BL)



DIFFERENT SCENARIOS

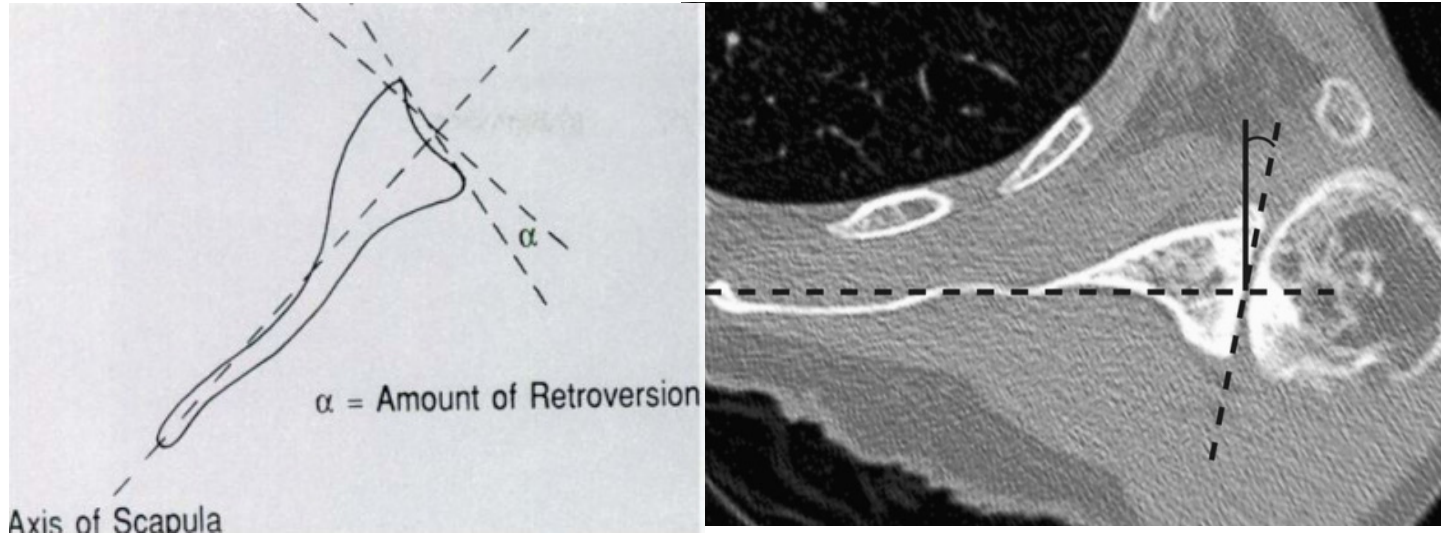


COSA VALUTARE DELLA GLENA QUANDO PIANIFICO UNA PROTESI

- 1. Grado di deformità della rima articolare sul piano coronale ed assiale**
- 2. Glenoid Vault**
- 3. Grado di medializzazione del centro di rotazione**

PLANNING PREOPERATORIO

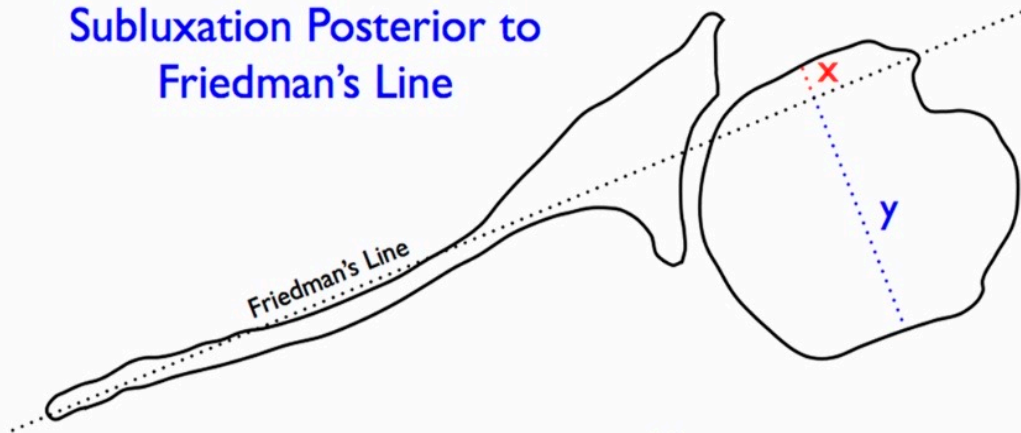
FRIEDMAN METHOD



PLANNING PREOPERATORIO

Horizontal glenoid morphology (Walch)

Calculate % Humeral Head
Subluxation Posterior to
Friedman's Line



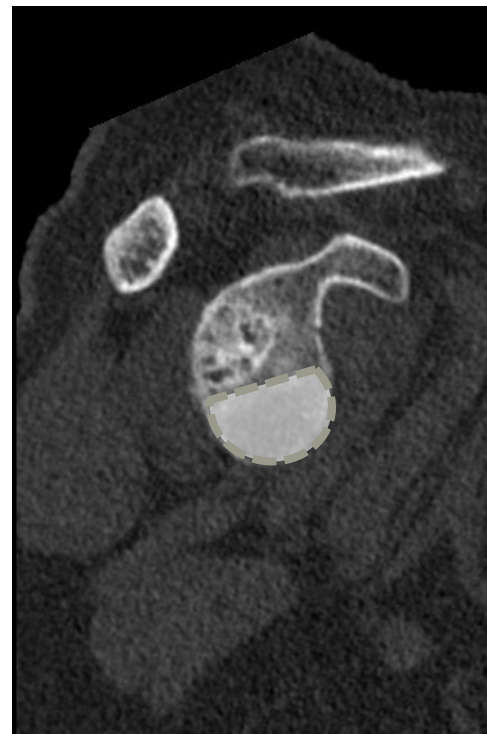
$$\% \text{ Subluxation} = \frac{y}{x + y}$$

PLANNING PREOPERATORIO

Vertical glenoid morphology (Sirveaux)
Omoartrosi Eccentrica

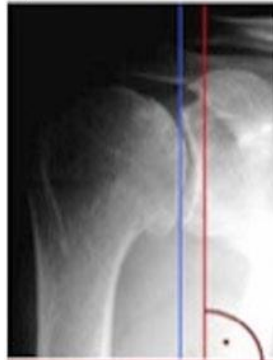
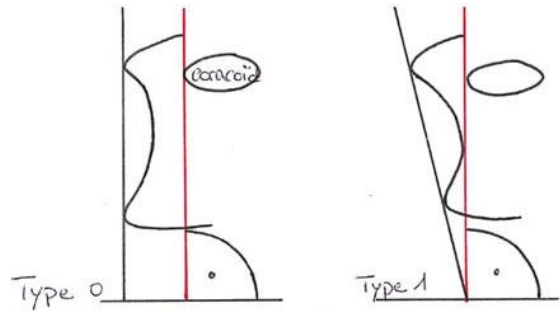


PLANNING PREOPERATORIO



PLANNING PREOPERATORIO

Vertical glenoid morphology (Habermeyer)
Omoartrosi Concentrica



A



B

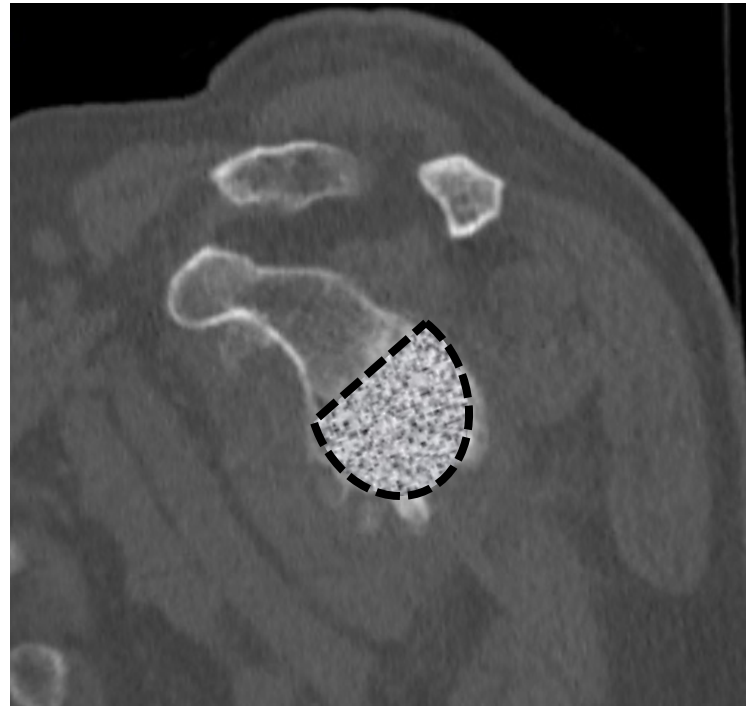
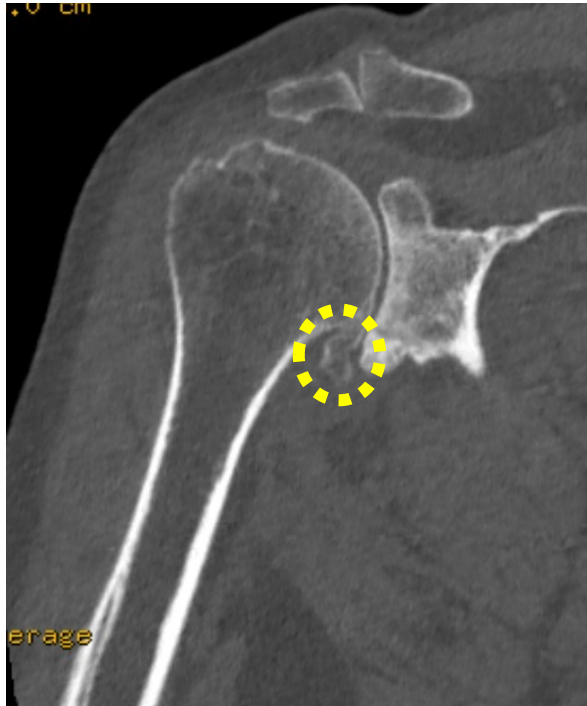


C

D

PLANNING PREOPERATORIO

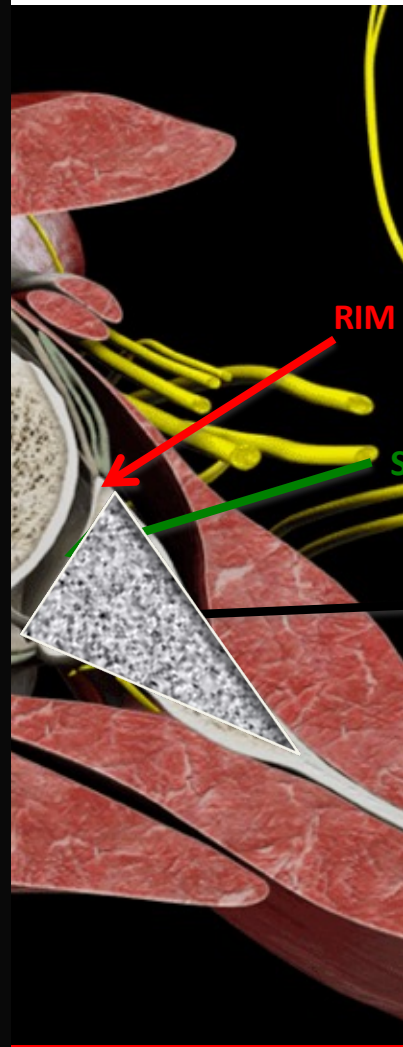
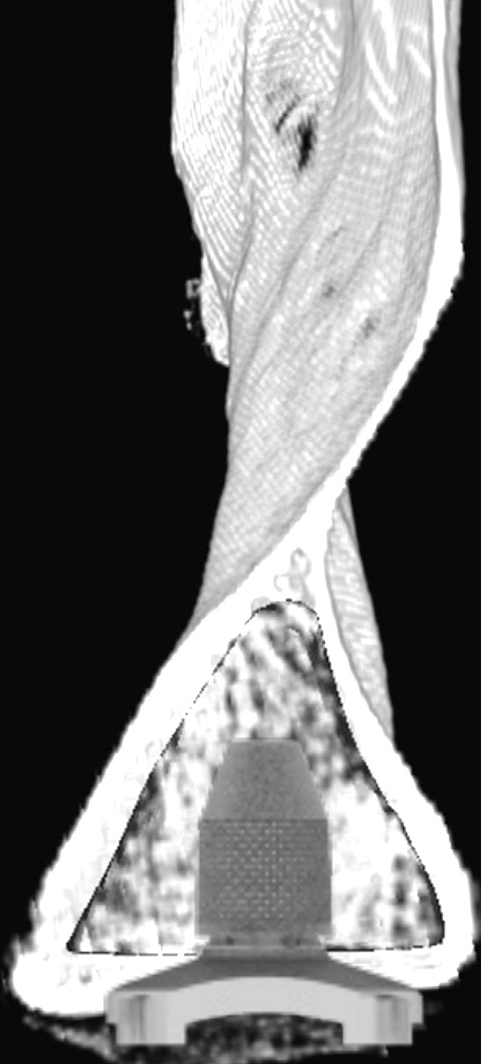
TC Omoartrosi Concentrica

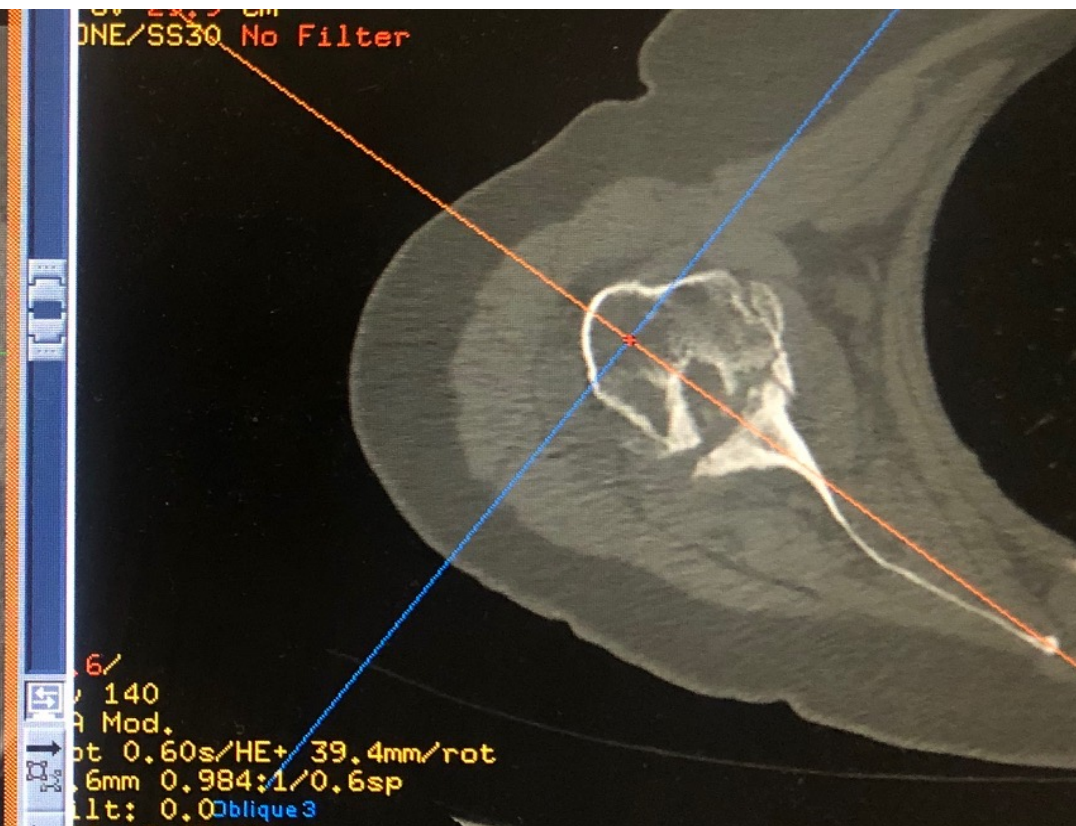


COSA VALUTARE DELLA GLENA QUANDO PIANIFICO UNA PROTESI

2. Glenoid Vault

(29.3 mm +/- 3.90 mm)





COSA VALUTARE DELLA GLENA QUANDO PIANIFICO UNA PROTESI

3. Grado di medializzazione

- . Distanza tra la superficie articolare e la base della coracoide
- . Distanza tra il margine laterale dell'acromion e il trochite



TREATMENT OPTIONS

1. Eccentric reaming

2. Augmented glenoid

3. Bone graft

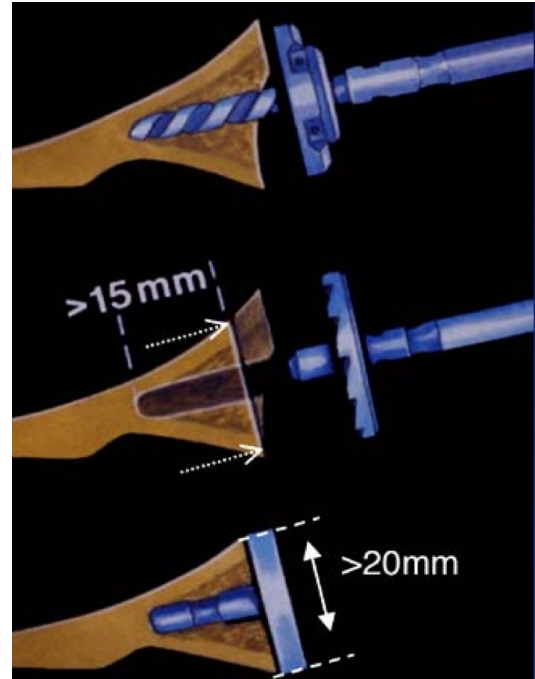
- Autograft (Humeral Head or Iliac crest)
- Allograft (Femoral head and neck)

4. Hemiarthroplasty (CTA)

5. Promade

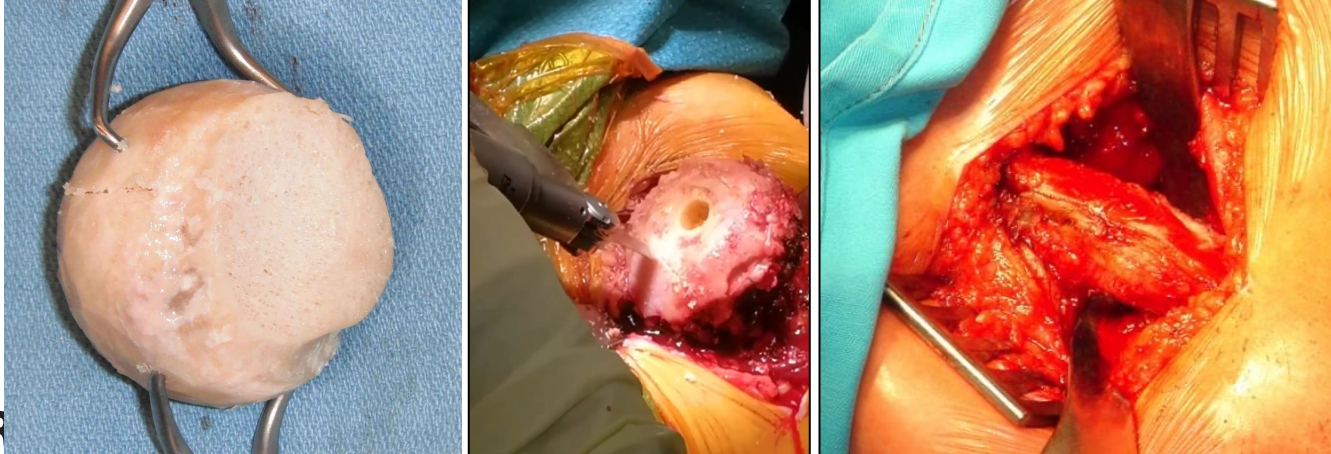
ECENTRIC REAMING

ACCEPT UP TO 10° - 15°
RETROVERSION

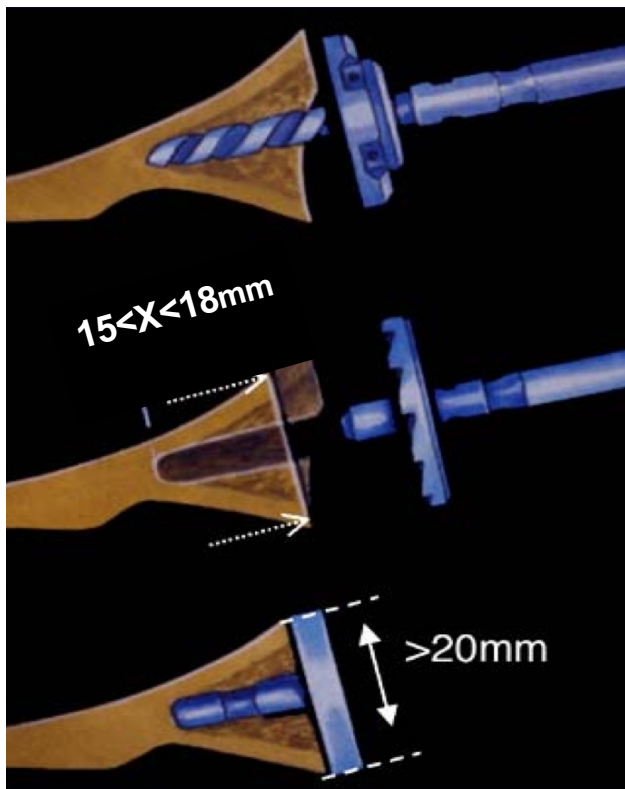


BONE GRAFT

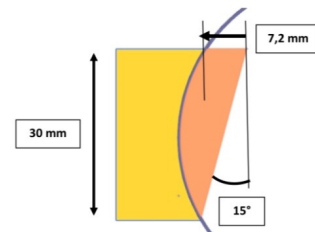
- **Autograft (Humeral head or iliac crest)**
- **Allograft (Femoral head and neck)**



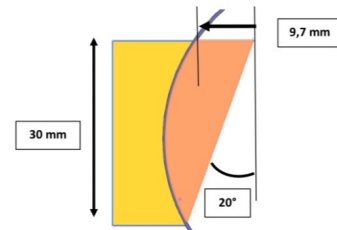
ECCENTRIC REAMING & SIMMETRIC BONE GRAFT



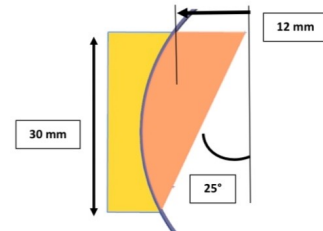
Erosione 15°



Erosione 20°



Erosione 25°







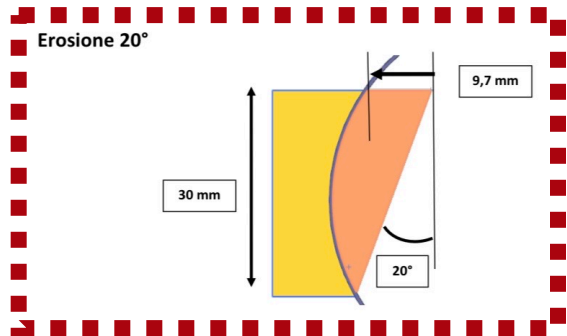
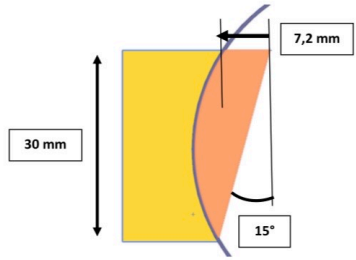
1

1 Distance : 2.78 cm

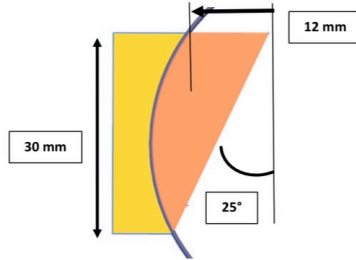
1 Min/Max : -69/706

1 Pixel count : 55

Erosione 15°

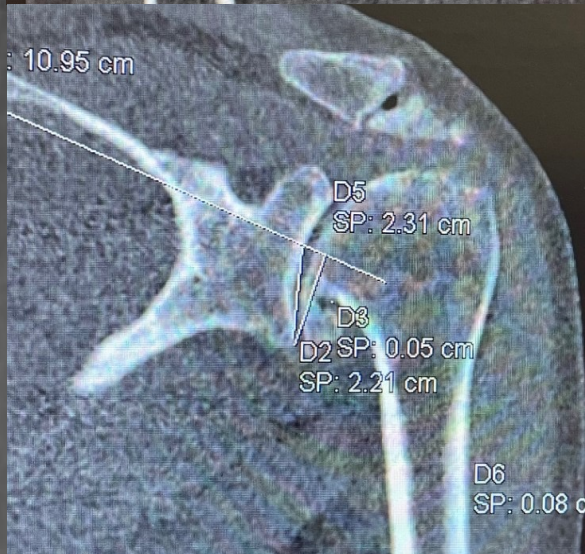
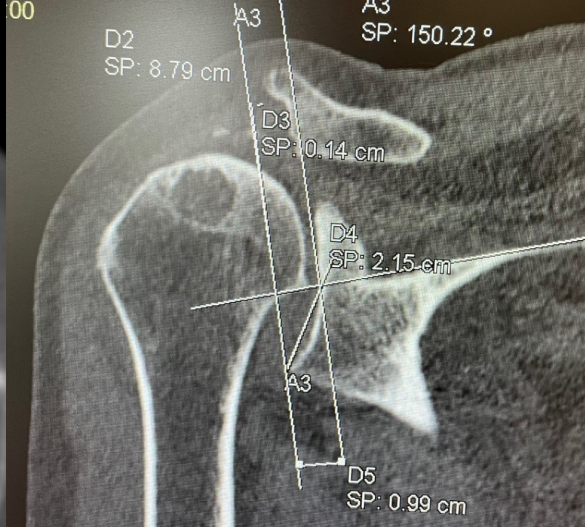
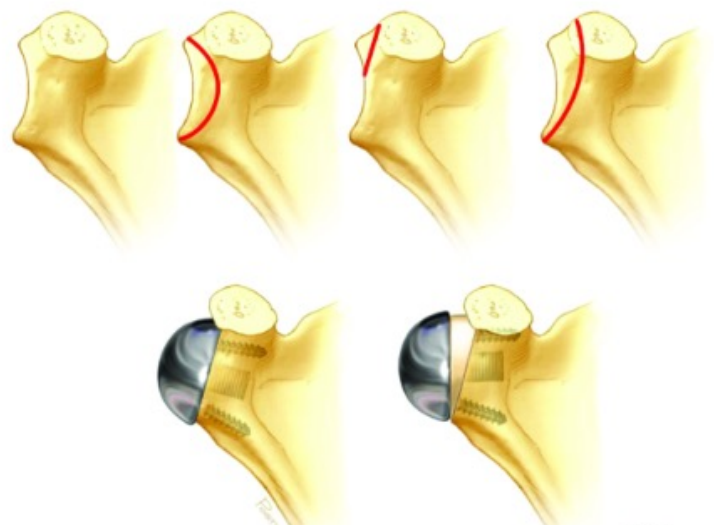
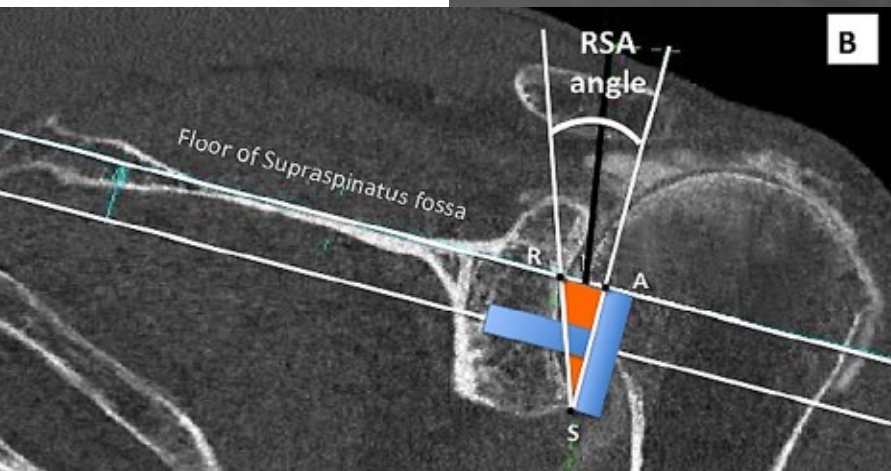


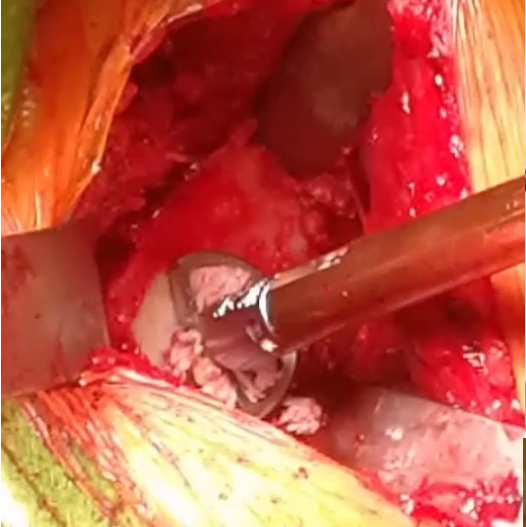
Erosione 25°



27.8 mm GV –
9.7 mm correzione =

18 mm GV residuo

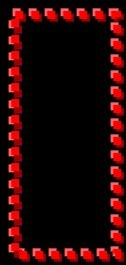
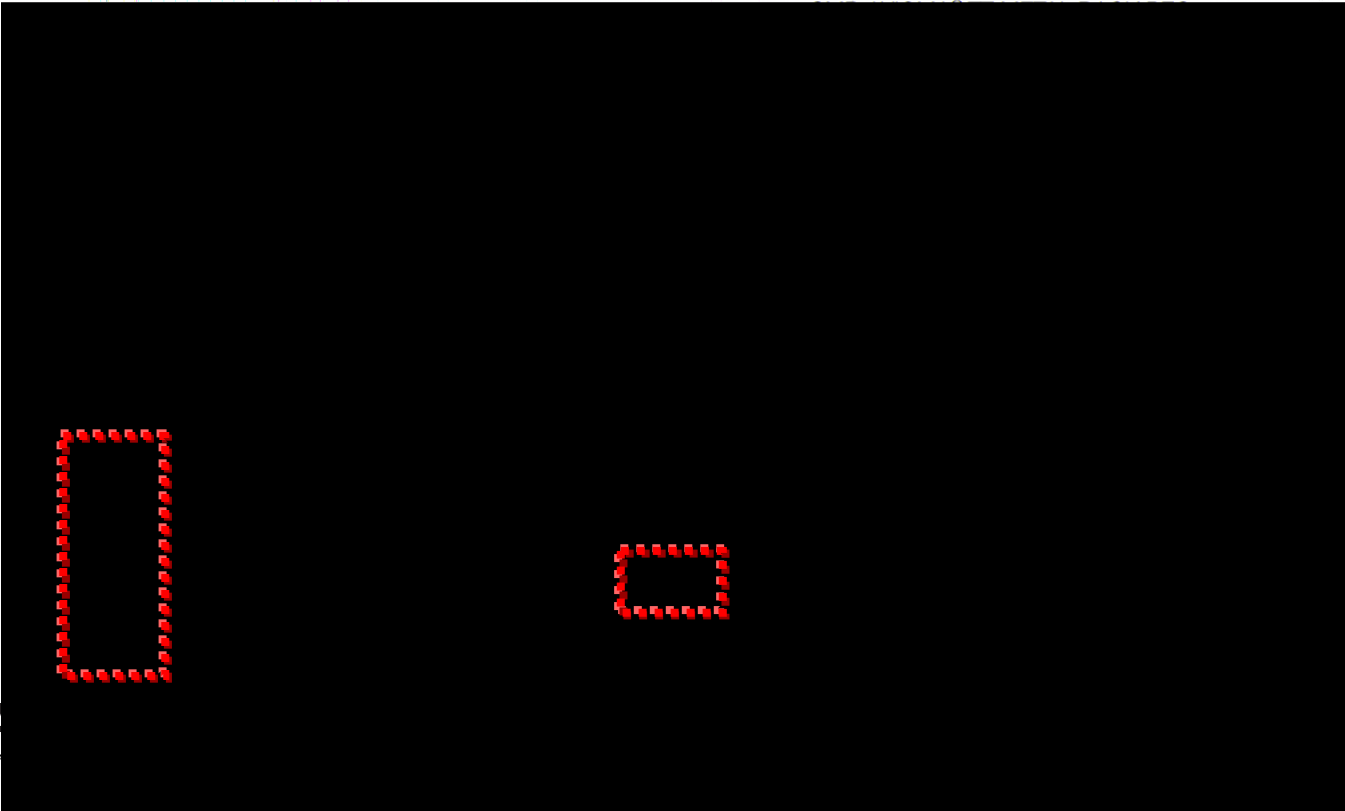


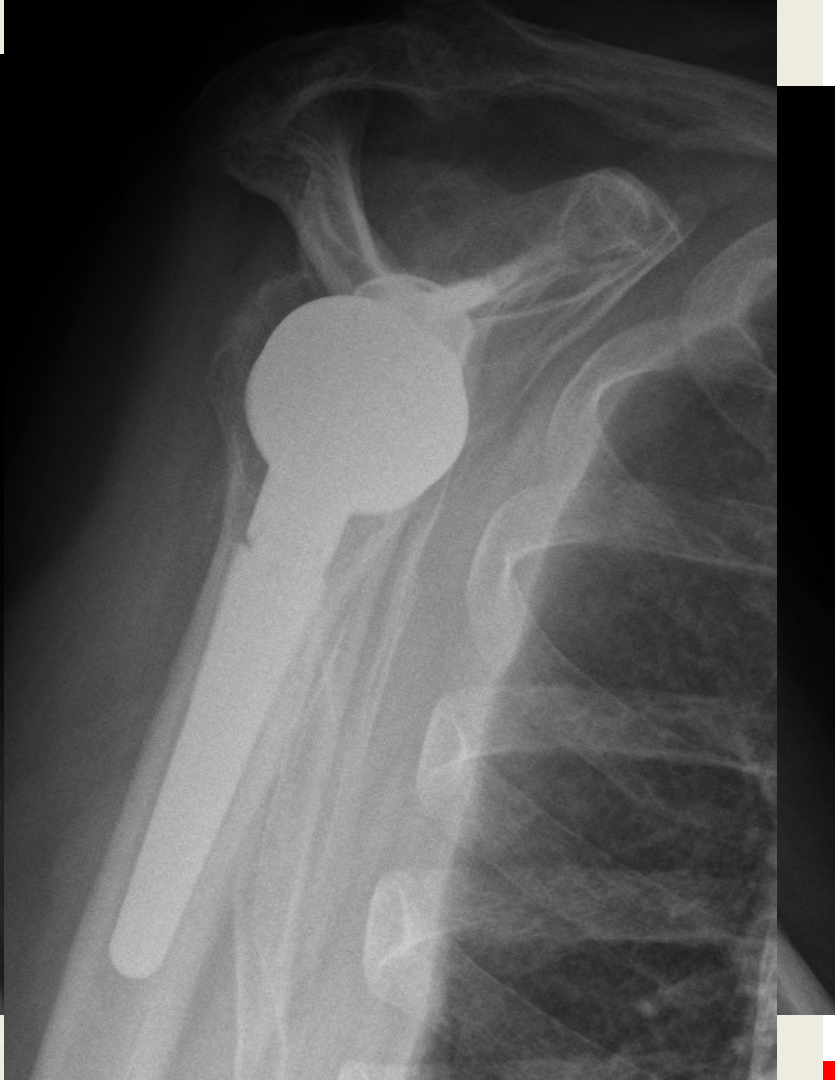
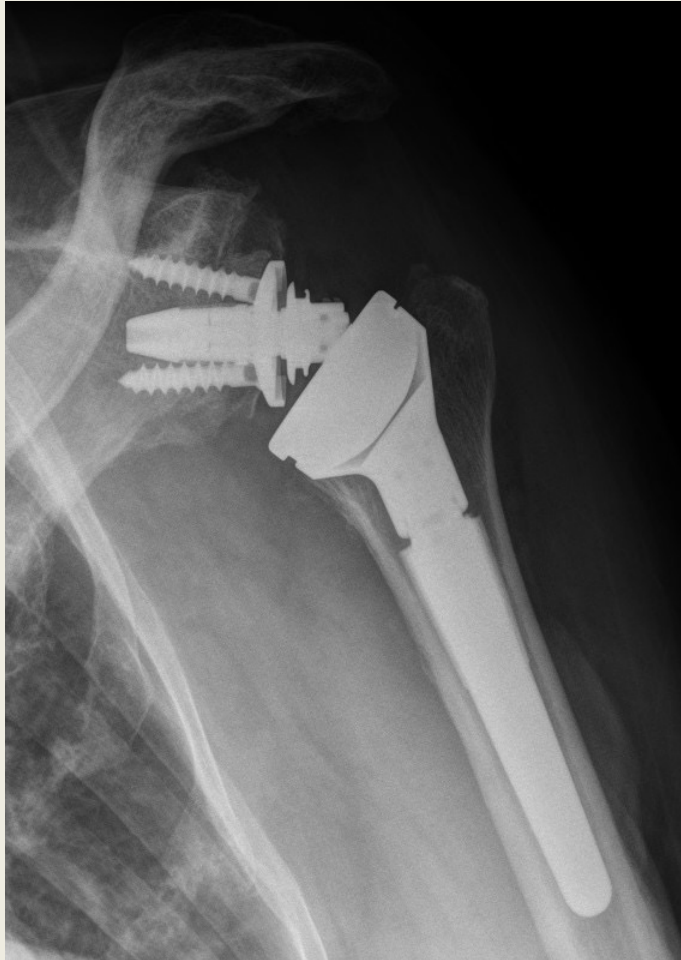


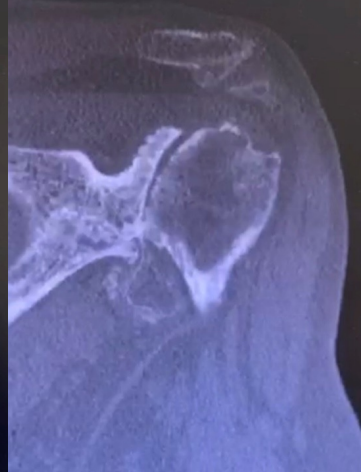
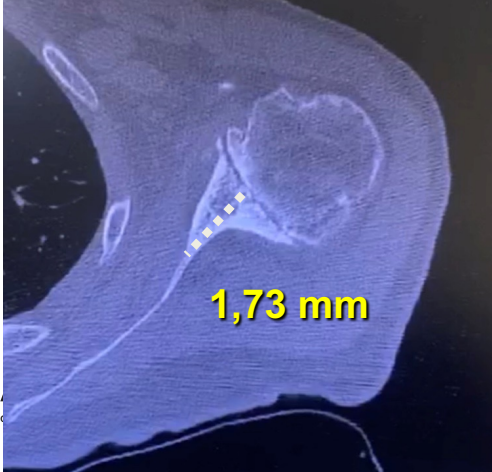
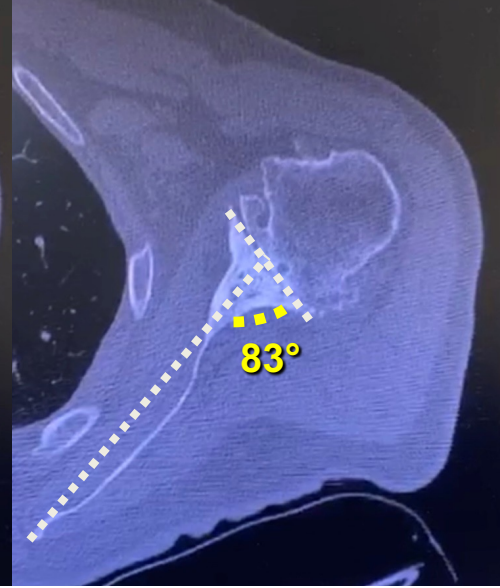
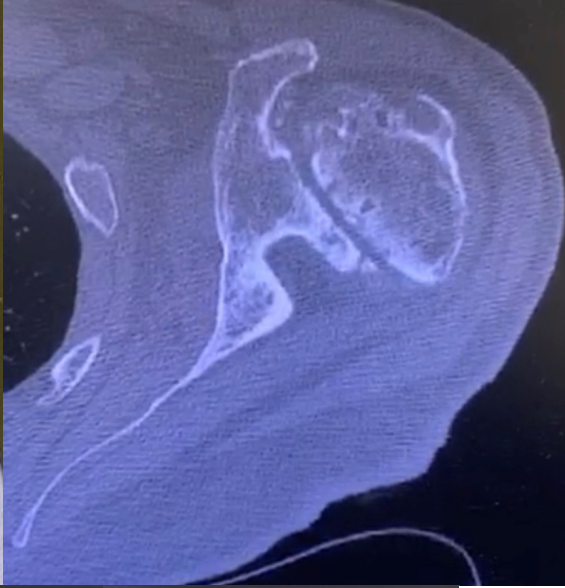


SMR AXIOMA® TT METAL BACK SURGICAL TECHNIQUE

Product Dimensions



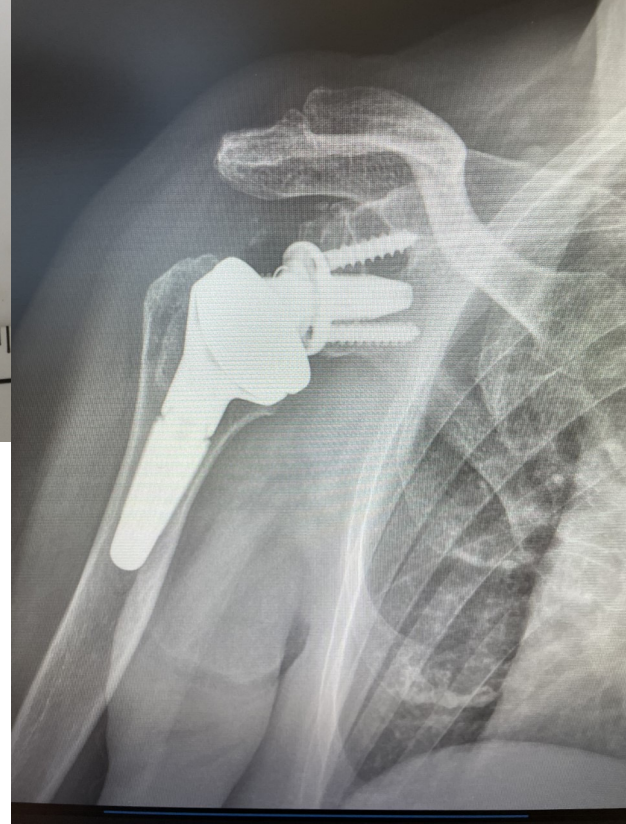
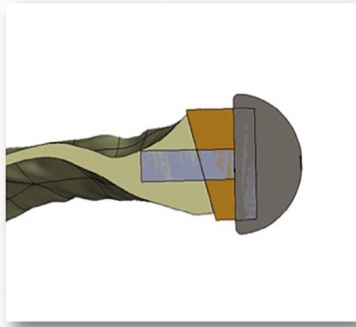
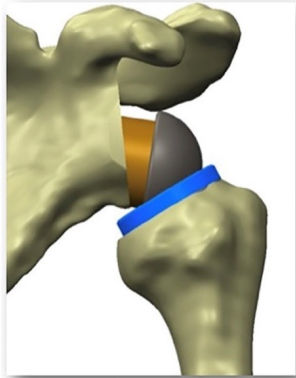
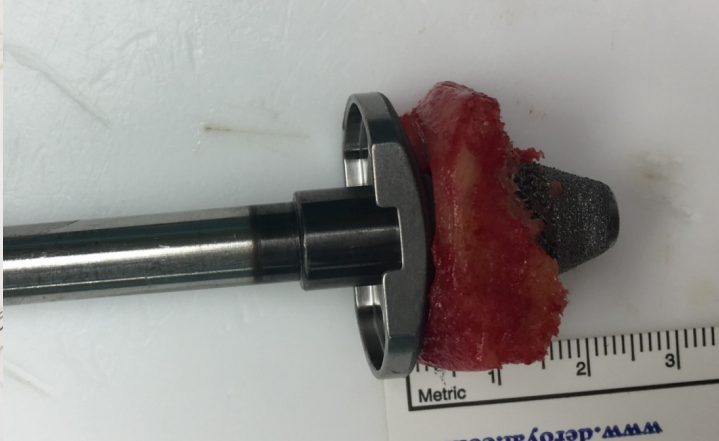
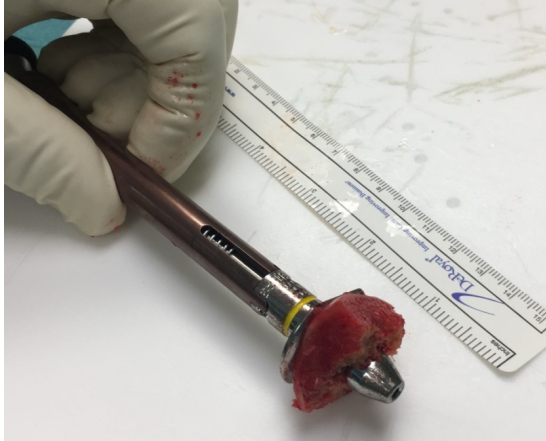




2 YEARS FOLLOW-UP

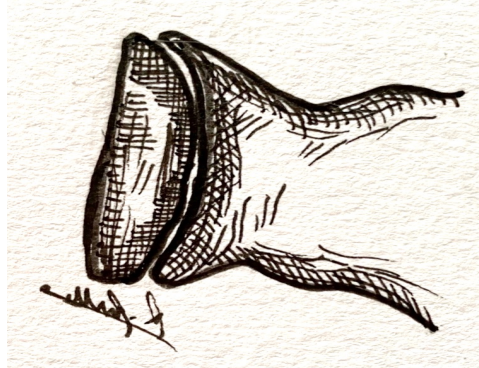
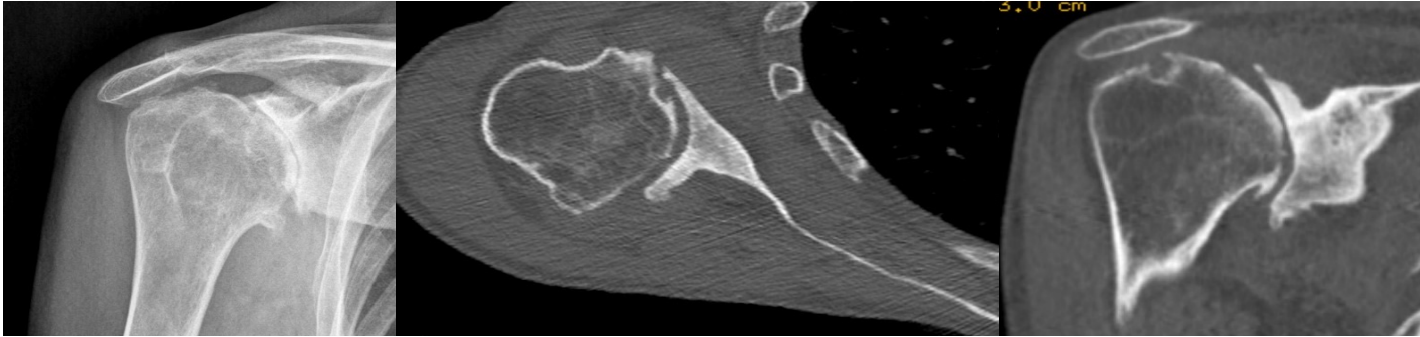


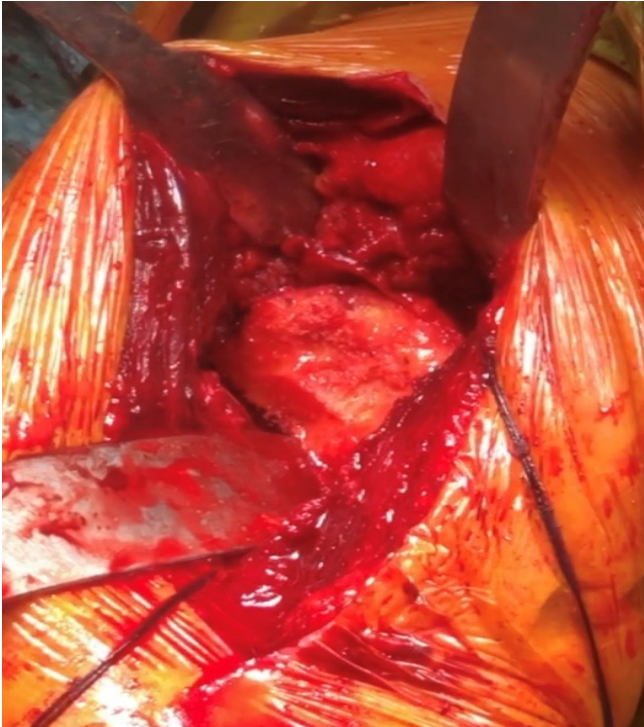
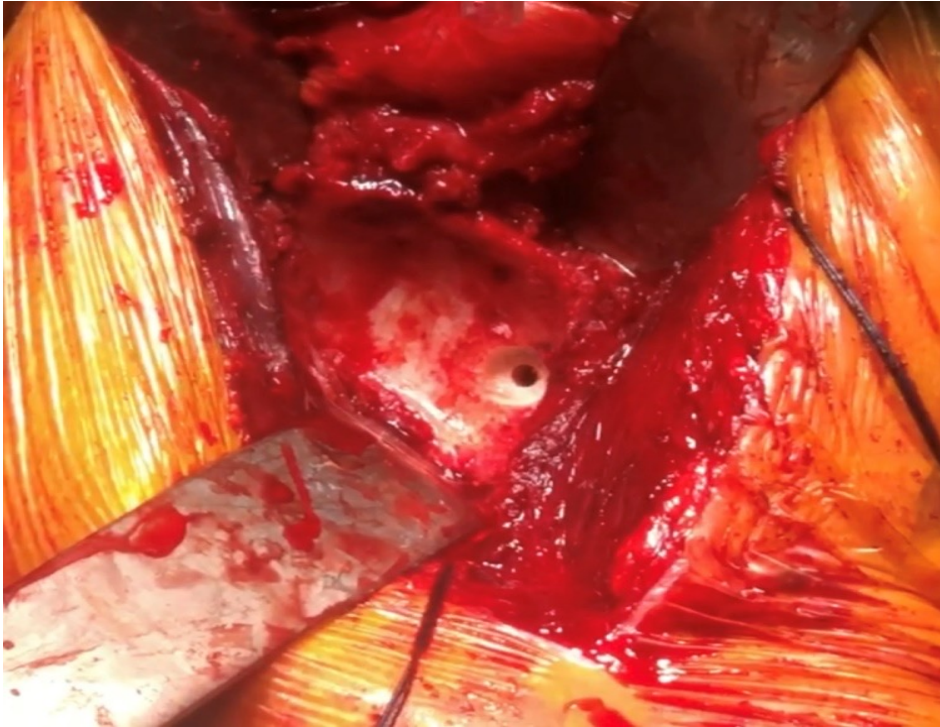
PARTIAL ECCENTRIC REAMING & ASIMMETRIC BONE GRAFT



NO REAMING & CIRCUMFERENTIAL BONE

GRAFT









CONCLUSIONI

- **Corretta valutazione della deformità ossea glenoidea su tutti i piani**
- **Corretta tecnica chirurgica**

Grazie

